
Unit → 2

Subject → Analog ckt

Faculty → Dr. Nidhi chouhan

Paper code → BT-402

Lecture 5 → Feedback topologies

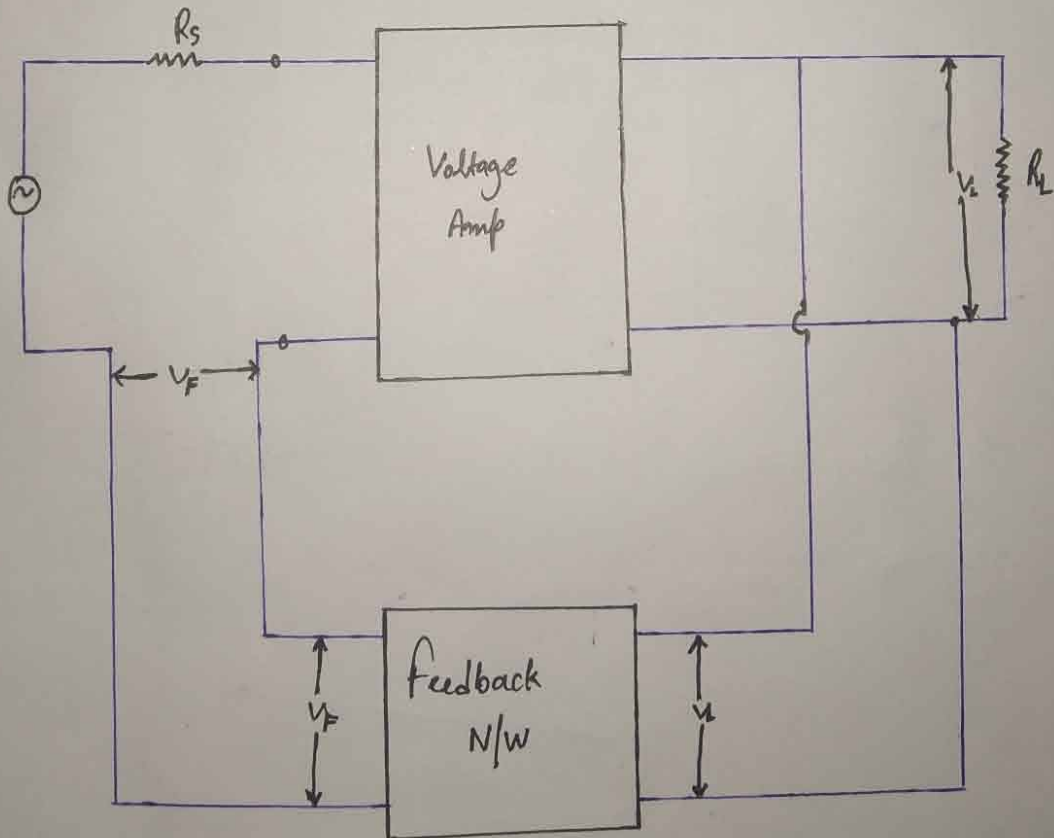
feedback topologies

There are four types of topologies.

- ① Voltage Series topologies.
- ② Voltage Shunt topologies.
- ③ Current Series topologies.
- ④ Current Shunt topologies.

① Voltage Series topologies →

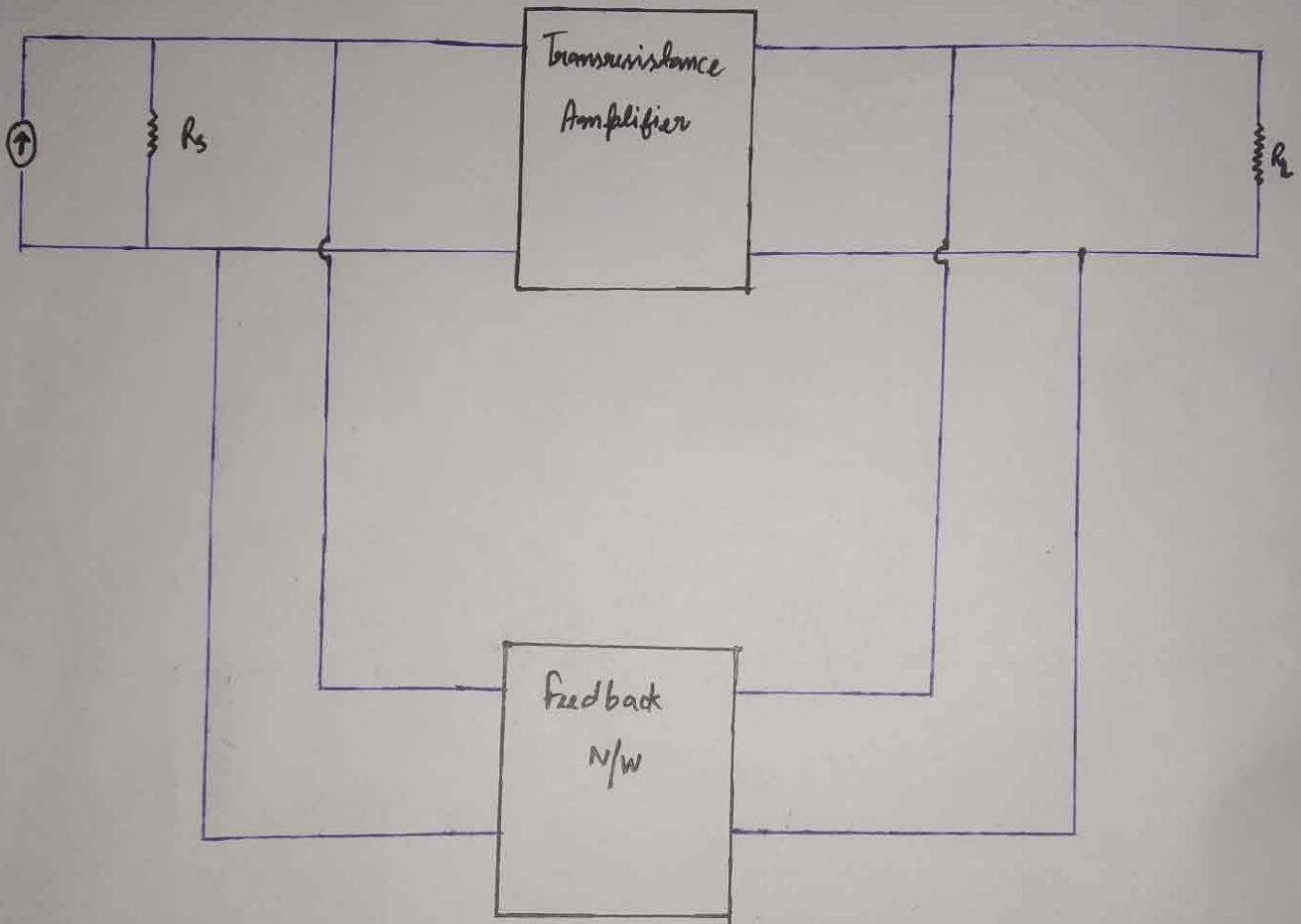
Voltage series → voltage sampling + series mixing



SHOT ON REDMI 7
AI DUAL CAMERA
 $R_i = \text{high (increase)}$
 $R_o = \text{low (Decrease)}$

② Voltage Shunt Topology →

Voltage Shunt → Voltage Sampling + Shunt Mixing.



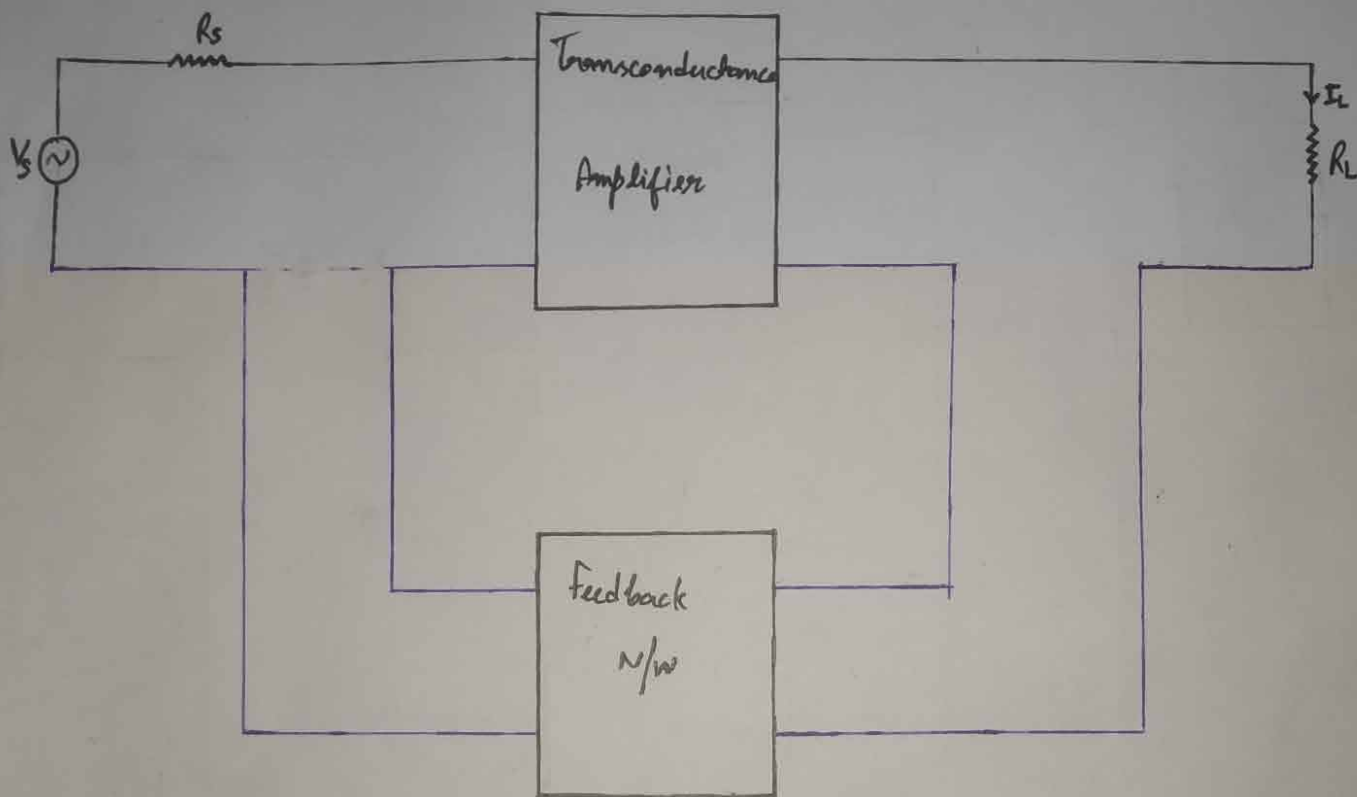
$R_i = \text{low}$ (Decrease)

$R_o = \text{low}$ (Decrease)



③ Current Series Topology

Current Series Topologies \rightarrow Current Sampling + Series mixing



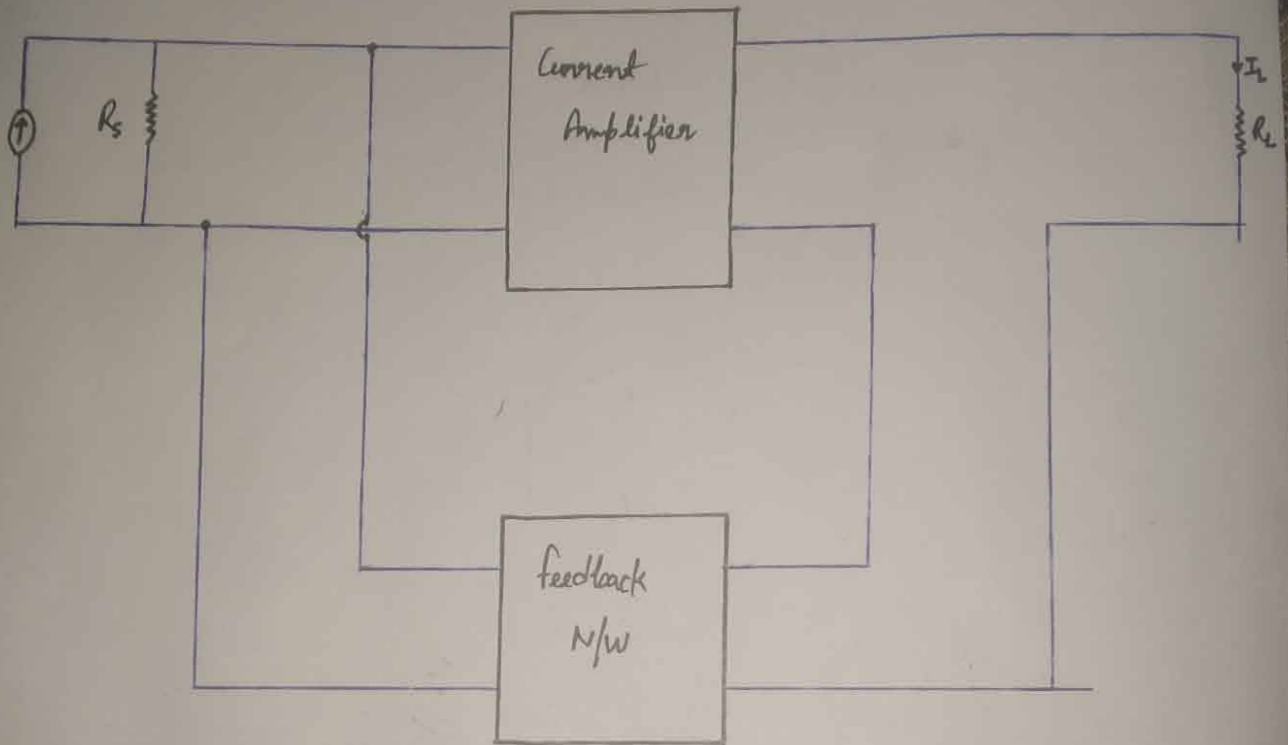
$R_i = \text{High (Increase)}$

$R_o = \text{High (Increase)}$



Current Shunt Topology

Current Shunt Topology \rightarrow Current Sampling + Series Mixing Shunt



$R_i = \text{Low (Decrease)}$

$R_o = \text{High (Increase)}$

